




csgreen  Product range
CO₂-reduced steel.
SPAETER begins today.

Reliable. Independent. Sustainable.

CO₂-reduced steel

Steel for a sustainable future.

The future of steel production and steel trade has now entered the inevitable path to decarbonization. With the CSGreen product range, the SPAETER Group is setting new standards for the sustainable design of the steel supply chain. For a broad range of product categories, we are able to offer CO₂-reduced variants, significantly minimizing the carbon footprint in comparison to conventional steel production. Leveraging our long lasting and close co-operation with various suppliers, we are able to provide you with the whole range of CO₂-reduced steel products as a one-stop-shop. The positive contribution to your carbon footprint is verified by reliable manufacturer certificates. Join our mission on the path to a more sustainable future by sourcing steel products as presented in this document and significantly reduce the carbon footprint of your company.

Consistently green. Since 1875.

In our green colors we are well known as the reliable trading partner for any type of steel product for almost 150 years. With our CSGreen program, we are now able to offer a “green” variant to our customers also. For each such product, we quote the residual CO₂ emissions per ton until delivery ex works from the steel manufacturer’s mill. The positive contribution achieved by sourcing the relevant CO₂-reduced variant is made transparent by comparison to the global average carbon footprint in conventional production.* This will allow you to reliably assess the potential for reduction of your company’s carbon footprint.

* CO₂ emissions according to the manufacturer or comparative value according to the Technical Report of the Joint Research Centre (JRC) of the European Commission <https://publications.jrc.ec.europa.eu/repository/handle/JRC134682>

CSGreen

The new brand for sustainable steel products.
Of course by SPAETER. Consistently green. Since 1875.

csgreen

The concept of our brand.



The CSGreen tree

The CS Green tree marks all products in the CSGreen product range, which are characterised by significantly reduced carbon footprint.



CO₂ savings

The figure shows you the percentage of CO₂ savings compared to a conventionally produced product in a global average. In this case, the carbon footprint would be reduced by 67% compared to the sourcing of a conventional steel product.



The CSGreen label

The CSGreen label consists of the CSGreen tree and an indication of CO₂ savings. When you see this label, you can immediately recognize a sustainable CSGreen product and find out how much CO₂ it saves.

The green option
in steel. CSGreen.

Sheets & coils _____ 6

Hot-rolled, cold-rolled, hot-dip galvanized

Heavy plates _____ 9

Bar steel _____ 10

Sectional steel &
wide flange beams ____ 11

CSGreen⁶⁷

Hot-rolled sheets & coils

G **Grades**
S235JR · S355MC



Length

Sheets
up to 8,000 mm

Thickness

Sheets & coils
3.0 mm – 15.0 mm

Width

1,250 mm – 1,500 mm

Other grades and dimensions on request

Conventional steel



Quantity of CO₂ per ton
of conventional steel
* see page 2

Carbon footprint of hot-rolled sheets & coils



CO₂ emissions per
ton of CSGreen



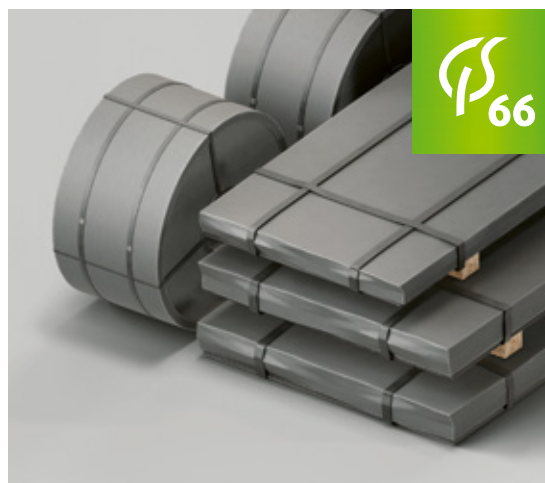
CO₂ savings per
ton of CSGreen



Percentage of
CO₂ savings

Cold-rolled sheets & coils

G Grades
DC01



Length

Sheets
up to 8,000 mm

Thickness

Sheets & coils
1.0 mm – 3.0 mm

Width

1,250 mm – 1,500 mm

Other grades and dimensions on request

Conventional steel



Quantity of CO₂ per ton of conventional steel
* see page 2

Carbon footprint of cold-rolled sheets & coils



CO₂ emissions per ton of CSGreen



CO₂ savings per ton of CSGreen

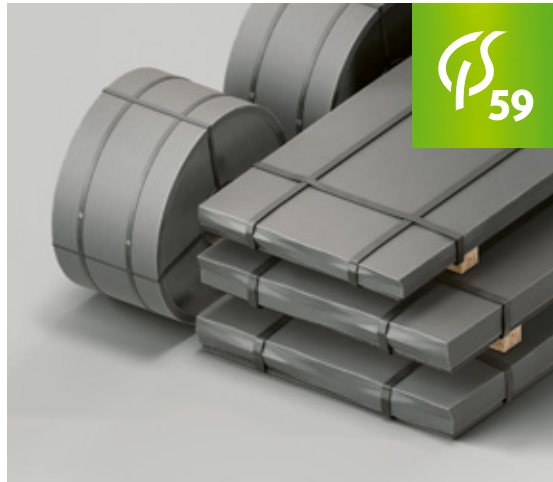


Percentage of CO₂ savings

CSGreen₅₉

Hot-dipped galvanised sheets & coils

G **Grades**
DX51D (Z100 & Z275)



Length

Sheets
up to 8,000 mm

Thickness

Sheets & coils
1.0 mm – 3.0 mm

Width

1,250 mm – 1,500 mm

Other grades and dimensions on request

Conventional steel



Quantity of CO₂ per ton
of conventional steel
* see page 2

Carbon footprint of galvanised sheets & coils



CO₂ emissions per
ton of CSGreen



CO₂ savings per
ton of CSGreen



Percentage of
CO₂ savings

CSGreen  51

Heavy plates

G **Grades**
S355J2+N



Length

Plates
6,000 mm – 12,000 mm

Thickness

Plates
6.0 mm – 120 mm

Width

1,500 mm – 3,000 mm

Other grades and dimensions on request

Conventional steel



Quantity of CO₂ per ton of conventional steel
* see page 2

Carbon footprint of heavy plates



CO₂ emissions per ton of CSGreen



CO₂ savings per ton of CSGreen



Percentage of CO₂ savings

csGreen⁸⁵

Bar steel



Grades

S235JR · S355J2



Products

Flat steel · Wide flat steel
Angles · T-sections · U-sections ·
Round bar steel · Square bar



Dimensions

Flat steel

20 × 5 mm – 150 × 60 mm

Equal angle sections

20 × 3.0 mm – 250 × 24 mm

T-sections

T20 – T140

Round bar

8.0 mm – 200 mm

Wide flat steel

150 mm – 500 mm

Unequal angle sections

30 × 20 mm – 250 × 90 mm

U-sections

U30 – U65

Square bar

8.0 mm – 100 mm

Other grades and dimensions on request

Conventional steel



Quantity of CO₂ per ton
of conventional steel
* see page 2

Carbon footprint of bar steel



CO₂ emissions per
ton of **CSGreen**



CO₂ savings per
ton of **CSGreen**



Percentage of
CO₂ savings

Sectional steel & wide flange beams



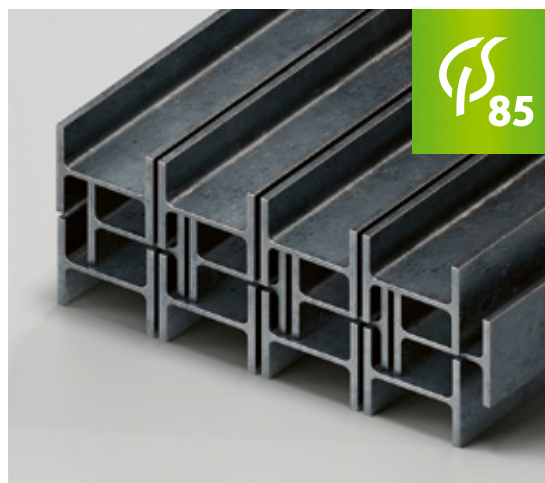
Grades

S235JR · S355J2



Products

UNP · IPE · INP
HEB · HEA · HEM



Dimensions

UNP

80 mm – 400 mm

INP

80 mm – 400 mm

HEA

100 mm – 1,000 mm

IPE

80 mm – 600 mm

HEB

100 mm – 1,000 mm

HEM

100 mm – 1,000 mm

Other grades and dimensions on request

Conventional steel



Quantity of CO₂ per ton of conventional steel
* see page 2

Carbon footprint of sectional steel & wide flange beams



CO₂ emissions per ton of CSGreen



CO₂ savings per ton of CSGreen



Percentage of CO₂ savings

Sustainability

The core of our value system.



People

Responsibility for people is the focus of our attention. In our day-to-day operations, we implement the highest standards of occupational health and safety. We respect the diversity of people and advocate equal opportunities for them.

Environment

We are actively committed to environmental and climate protection. We are tackling the human challenge of “mitigating climate change” in various projects to avoid emissions in the services process and from energy procurement. In accordance with ambition to be a problem-solver, we also strive to supply our customers with “green steel” as needed.



Society

We have defined our commitment to socially responsible activities and compliance in a code of conduct, binding for all companies and employees in the SPAETER Group. Compliance with the code is constantly monitored and any violations are strictly sanctioned.

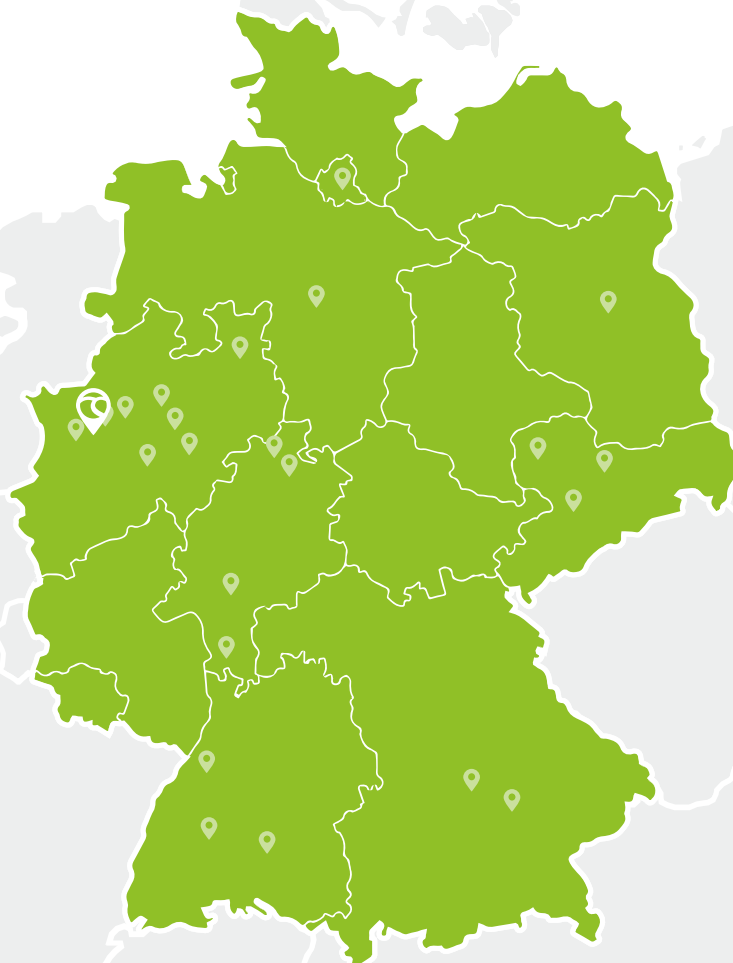


YOU CAN FIND
OUT MORE ABOUT
SUSTAINABILITY
ON OUR WEBSITE

SPAETER Group

Your network for green steel.

The SPAETER Group stands for a comprehensive network in steel trade. Wherever you are, you can order our product range at any of our locations and benefit from sustainable steel of the highest quality. Our 15 sales-companies are present for you throughout Germany to make your projects more sustainable. Put your trust in CARL SPAETER.



ORDER YOUR
GREEN STEEL
AT ONE OF OUR
LOCATIONS NOW



Give us a call!

Visit us online and find the right
contact for your enquiry.

www.spaeter.de



CARL SPAETER GmbH

Philosophenweg 17 · 47051 Duisburg
Tel. +49 203 2818-0 · info@spaeter.de